

**1 Floor Plan**  
 FEMA101 Scale: 1/16" = 1'-0"

NOTE:  
 All window openings are above the top of Flood Stem Wall

Detail A - Typical Wall

Canopy

Detail B - Opening

Detail B - Opening

Detail A - Typical Wall

Canopy

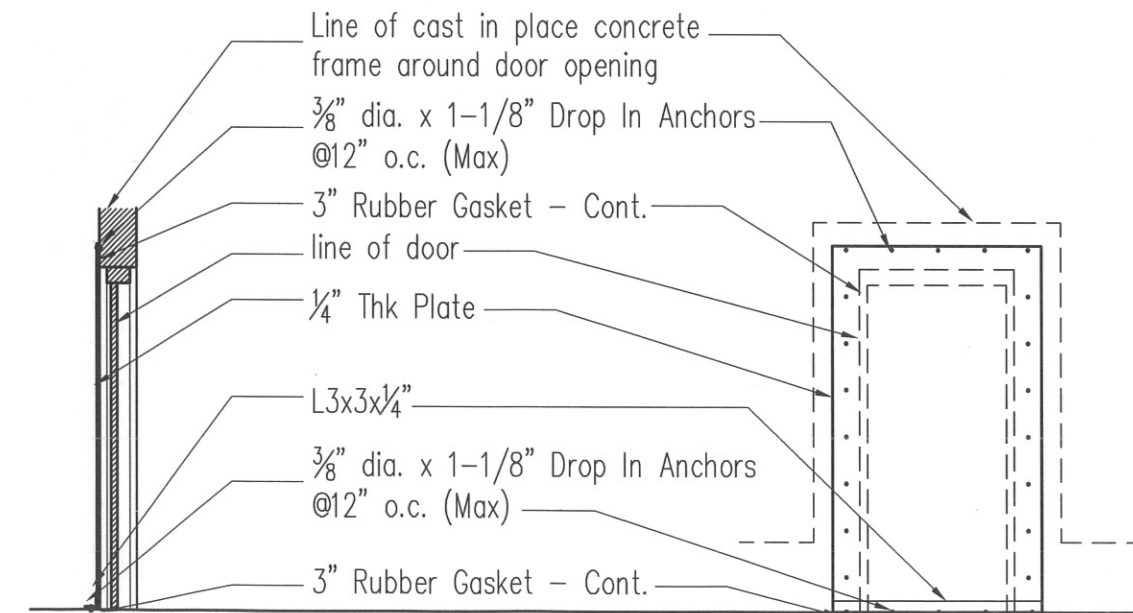
Detail B - Opening

Detail B - Opening

**A Detail - Stem Wall**  
 FEMA101 Scale: 1/2" = 1'-0"



- Cementitious Lap Siding on Vapor Barrier on 1/2" Exterior Sheathing
- 8" Mtl Studs at 12" O.C.
- 5/8" Gyp. Bd on 2" Cont. Ridid Insulation
- 8" Cast in Place Concrete Stem Wall
- Cont. Membrane waterproofing - Lap over top of stem wall
- Cont. sealant at sidewalk
- See Civil for grades at perimeter
- (5) #4 Cont.
- Cont. foundation drain with filter fabric
- #5 @ 10" o.c. vertically
- #5 @ 12" o.c. Top and Bot.
- (3) #4 Cont. Top and Bot.



**B Detail at Door Openings**  
 FEMA101 Scale: 1/2" = 1'-0"

*Harry J. Greenhill*  
 1.4.2017  
 FL AR# 17774

GOODWYN MILLS CAWOOD  
 2660 EastChase Lane, Suite 200  
 Montgomery, AL 36117  
 Tel 334.271.3200 GMCNETWORK.COM

SUPPLEMENTAL DRAWING  
 GMC #  
 DATE: XX/XX/XXXX  
 DRAWN BY: ----

Comment Revisions 1/4/17 8/22/16  
 1

DESCRIPTION:  
**Flood Proof Wall and Openings**  
**FEMA-101**

REF. SHEET#-101